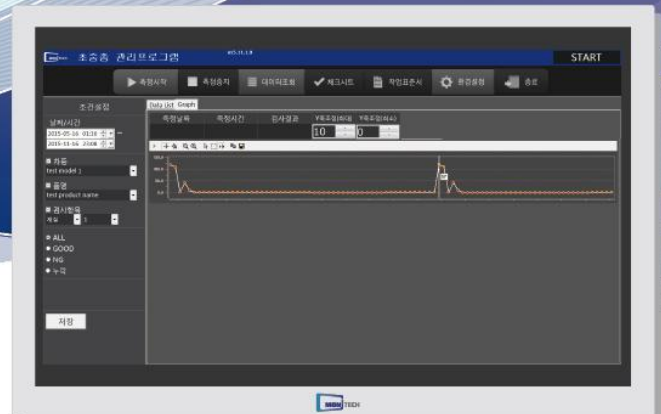


14

Inspection record computerized management system for the Initial, middle, and final products

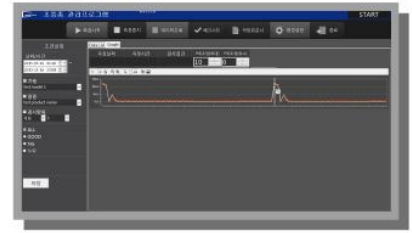
Model IM (Inspection Manager)



Monitech co.,Ltd.
www.monitech.co.kr

System Outline

- It has computerized system that used to manual inspection of the first, middle, and final manufactured products. It makes an operator more convenient to manage and creates a database to easier to track LOT. It is the same as the initial, middle and final inspection record computerized management system in MIS.



Product feature

- Computerization of measured data
- Automatic input of measured data by using RS communication
- Embedded with data analysis and report creation

Application Area

- Management of automobile manufacturing inspection process
- Other inspection process control

A diagram of the computerized control system of the initial middle, and final product inspection



Example of S/W Main Screens



Main screen



Equipment daily checklist



Data search screen



Setup screen



Work operation sheet

S/W function guide

- Work standard registration control
- Inspection time setting control
- Alarm setting control (TTS)
- Inspection item registration control
- Inspection equipment registration control
- Product image photographing and automatic storing
- Computerized control of trouble shooting data
- Work item bookmark
- Digital inspection device link and automatic data input

Main Clients

Samphung HiTech, Samyoung Enterprise, Orient Plastics, etc.

Real-time welding quality control and inspection solution

Real-time welding monitoring system

- 01. Welding quality monitoring system (ARC/SPOT/TIG)
- 02. Intelligent welding monitoring system (NUT & BOLT Projection welding)
- 03. Welding calibration master equipment (ARC/SPOT/DUO)
- 04. MICRO SPOT welding monitoring system
- 05. High speed thermal imaging welding monitoring system
- 06. Ultrasonic welding monitoring system
- 07. Laser welding monitoring system

Welding process measurement and equipment

- 08. Welding force measuring gauge (FORCE)
- 09. Current and force gauge (HANDY)
- 10. Advanced current and force gauge (HANDY PRO)
- 11. Measuring analyzing equipment for WPS/PQR (WPS)
- 12. Welding waveform analysis management equipment (MULTI)

Inspection and integrated monitoring S/W

- 13. Integrated management and control system (MIS)
- 14. Inspection record computerized management system for the Initial, middle, and final products (IM)



Monitech co.,ltd.

ISO 9001 / ISO 14001 / INNOBIZ / Venture

Head office / R&D Center

92, Saebyeoksijang-ro, Sasang-gu, Busan,
46987, KOREA
Tel. +82-51-311-8691
Fax. + 82-51-311-8692
E-mail. monitech01@naver.com
Homepage www.monitech.co.kr
Blog. <http://blog.naver.com/yuria85>

Seoul branch / R&D Center

304, Sanjeong building
23, Gukhoe-daero 66-gil,
Yeongdeungpo-gu, Seoul,
07237, KOREA
Tel. +82-2-780-8691
Fax. +82-0303-0953-0954
E-mail. monitech2@naver.com